



SUCCESS STORIES

SIEMENS SHANGHAI MOBILE COMMUNICATIONS CONSOLIDATES CRITICAL INFRASTRUCTURE ON NETAPP SAN STORAGE

“The NetApp SAN solution enabled us to deploy a single integrated SAP system.”

WILLIAM TONG Chief Information Officer, Siemens Shanghai Mobile Communications

KEY HIGHLIGHTS

Location Shanghai, China

Industry Telecommunications

The Challenge

Production was increasing 40% per year. Any downtime impacts production.

Benefits

- Nonstop operation
- Increased productivity
- Streamlined backup
- Consolidation reduces TCO

THE CUSTOMER

Siemens Shanghai Mobile Communications Co., Ltd. (SSMC, www.siemensmobile.com.cn), is Siemens's biggest manufacturing facility outside Germany and the largest Siemens operating company in China. A leading manufacturer of mobile phones and mobile networking equipment, SSMC annually produces 14 million mobile phones and about 60,000 carrier units for mobile networks. In addition, SSMC has installed more than 34 GSM communications networks in 26 provinces for China Mobile and China Unicom.

THE CHALLENGE:

Complex, Fragmented Infrastructure

The telecom market in China in the past years has grown substantially, driven by China's tremendous economic growth and rapid modernization. As a result, SSMC has had to substantially increase its production to meet demand in China and around the globe. SSMC found itself confronted with the classic problems faced by rapidly growing businesses. The organization relied on a variety of applications that were not integrated with each other, making it difficult and time consuming to share information. Each application was hosted separately, resulting in SSMC having over 30 Windows® servers with local storage. To complicate matters further, a variety of backup products and processes were used.

THE SOLUTION:

Integrated SAP Solution on NetApp Fibre Channel SAN

SSMC decided to standardize on SAP to integrate all of its business applications, including financials, production planning, and logistics. “We now have a single integrated SAP system that covers all Siemens business in China,” points out William Tong, chief information officer, SSMC. “This has dramatically simplified business operations.”

To support its planned SAP infrastructure, SSMC engaged a consulting company to evaluate storage solutions from six enterprise storage vendors. “NetApp was chosen for deployment at SSMC, based on technological capabilities, ability to support our SAP and Windows environment, overall cost, and ability to provide local support in China,” says Tong.

For its storage infrastructure, SSMC needed a consolidated, highly available, and simple-to-manage solution that could ultimately be outsourced and managed by a third party. SSMC deployed a 6TB NetApp Fibre Channel SAN storage solution, with two NetApp systems clustered for high availability. One system provides storage for SAP and three underlying



Oracle® Database instances, which perform an aggregate of about two million transactions per hour. The other system provides SAN storage for SSMC's Exchange servers, which provide e-mail to over 2,500 users. If one NetApp system were to fail, the other would automatically take over its data service to protect the availability of Exchange and SAP.

BUSINESS BENEFITS:
Nonstop Operations, Increased Productivity, and Reduced TCO

Availability is a constant concern to any organization. "The major benefit of the SAP on NetApp solution is nonstop operation," says Tong. "We now operate 24x7x365 with virtually no unplanned downtime and only one or two planned maintenance downtimes each year."

The new solution also has substantial benefits in terms of business productivity. "SSMC management now has better data and can more easily access the information necessary to make critical decisions, thanks to our fully integrated SAP system, which speeds up decision making," adds Tong.

"The structured approach we have taken to our IT infrastructure also has reduced our total cost of ownership (TCO) through streamlined management processes and server and storage consolidation," continues Tong. The new infrastructure also simplifies backup.

One of the strategic goals of consolidation was to create an IT infrastructure that could be completely outsourced to reduce total cost of ownership. "We expect NetApp to play a key role in that infrastructure," concludes Tong.

ABOUT NETWORK APPLIANCE

Network Appliance is a world leader in unified storage solutions for today's data-intensive enterprise. Since its inception in 1992, Network Appliance has delivered technology, product, and partner firsts that simplify data management. Information about Network Appliance™ solutions and services is available at www.netapp.com.

SOLUTION COMPONENTS

- NetApp SAN solution
- NetApp storage systems
- NetApp SnapRestore® software
- NetApp SnapManager® software
- Legato NetWorker

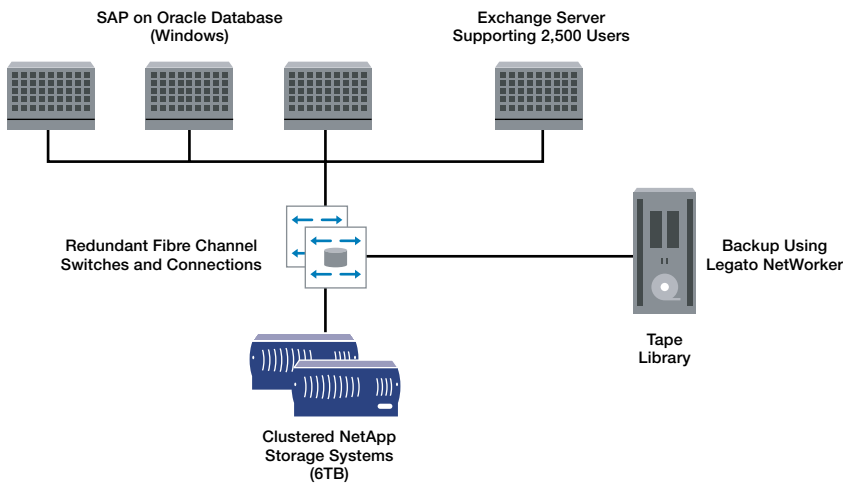


Figure 1) Siemens Shanghai Mobile Communications SAP and Exchange infrastructure.

