



NetApp™
Go further, faster



Software

NetApp Provisioning Manager

Speed provisioning workflows and boost capacity utilization with our automated provisioning solution

KEY BENEFITS

Limit risk of data loss

You can reduce the risk of data loss due to misconfigured storage when you use our policy-based automation for storage provisioning.

Enable business policy compliance

Standardize provisioning processes to develop a consistent and repeatable method of delivering storage to your business.

Maximize storage efficiency

Leverage thin provisioning, deduplication, and resource pools to get the highest possible level of storage efficiency from your NetApp® storage resources.

THE CHALLENGE

Reduce provisioning complexities

Provisioning your company's storage resources is a complex job. There are lots of choices to make, and, given the amount of manual processes most businesses use, there's lots of room for error. And most tools used to provision storage systems don't give you much room to appropriately configure for the type of data your users and applications demand. Instead of maximizing your storage resources, you end up with poor storage utilization or, in some cases, the distinct possibility of data loss.

THE SOLUTION

Streamline provisioning with Provisioning Manager

You can increase operating efficiency and eliminate hands-on complexity by streamlining your provisioning process with our Provisioning Manager solution. Because it's easy to use, you no longer have to be concerned with the complex task of dealing with the underlying storage technologies.

Provisioning Manager's integration with Protection Manager allows you to provision and protect your data. The moment you provision your data, you protect it. No additional steps or time required with this simple one-click solution. Once you install our Provisioning Manager, you can:

- Automate complex provisioning processes
- Check policy conformance
- Provision storage within the confines set by the storage administrator
- Automate deduplication and thin provisioning

REDUCE RISK OF ERRORS

Provisioning your storage is efficient and accurate with Provisioning Manager. You can proactively manage your storage infrastructure and virtually eliminate the inherent potential for human error that comes with manual management. When you open Provisioning Manager, you see an at-a-glance dashboard that displays a variety of your data metrics, including:

- Capacity utilization
- Snapshot™ usage
- Deduplication savings
- Space management events

With this information, you can create more consistent SAN and NAS resources by building policies that match the configuration of LUNs, volumes, and qtrees with their intended uses. You can then automatically apply the policies when new storage requests arrive, whether directly through the Provisioning Manager user interface or from other applications, such as SnapDrive®. This minimizes the risk of human error for

this complex task. Conversely, Provisioning Manager notifies you when storage resources get out of conformance with policies you've set, allowing you to rectify the situation before it becomes a crisis.

INCREASE PRODUCTIVITY

Provisioning Manager is intuitive and easy to use. With just a few clicks you can drill down to detailed information about your storage system. Your storage administrators can be more productive using our policy-based automation of repetitive, time-intensive tasks. And server and database administrators can perform self-service provisioning using the role-based access control on the centralized console. Because these tasks are performed from within the confines of policies set by your storage administrator, you know the system will remain stable and efficient. With Provisioning Manager, your IT architects define the policies based on your company's business requirements.

Policies include:

- Capacity
- Storage reliability
- Space provisioning requirements
- Access mechanism
- Security settings

Once policies are defined, your administrators can create logical data sets based on the intended use of the data. As they request new storage for those data sets, the application applies the preset policies during the automated creation of the volumes, LUNs, or qtrees.

MAXIMIZE STORAGE EFFICIENCY

You can leverage your current infrastructure investment and free your storage administration staff for more productive tasks by automating the allocation process with Provisioning Manager. To help make sure that you maximize your current resources, Provisioning Manager includes multiple storage efficiency features. With Provisioning Manager you can now automate thin provisioning and deduplication eliminating the need to overprovision so you can provide storage to your users just when they need it. You also have the use of resource pools for more efficient aggregation of resources. This frees your administrators from worrying about which physical storage resources are the most appropriate and efficient for a given request. You place storage controllers in resource pools only once—then the system automatically selects the best resource to meet a provisioning request. As the pools

become more allocated, Provisioning Manager notifies your storage administrators and suggests ways to increase available space.

Migrating data is extremely complex and time consuming. To improve your capacity management, the migration feature can help you perform the task of migrating your data with just a few clicks.

MANAGE FROM A BUSINESS PERSPECTIVE

Our goal is to help you manage data from a business perspective. That's why we made Provisioning Manager a key component in our Manageability Software Family, a comprehensive software solution set that enables administrators to manage data across applications, databases, servers, and storage. The software provides common management services, integration, security, and role-based access controls. The NetApp Manageability Software Family offers data and storage management tools that increase productivity, storage efficiency, and agility for organizations of all sizes.

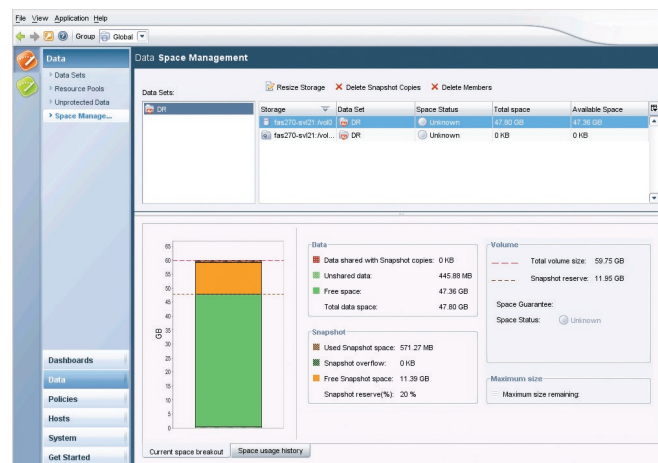


Figure 1) Provisioning Manager provides policy-based space management and reporting.

NetApp creates innovative storage and data management solutions that accelerate business breakthroughs and deliver outstanding cost efficiency. Discover our passion for helping companies around the world go further, faster at www.netapp.com.

© 2009 NetApp, Inc. All rights reserved. No portions of this document may be reproduced without prior written consent of NetApp, Inc. Specifications are subject to change without notice. NetApp, the NetApp logo, Go further, faster, Snapshot, and SnapDrive are trademarks or registered trademarks of NetApp, Inc. in the United States and/or other countries. All other brands or products are trademarks or registered trademarks of their respective holders and should be treated as such. DS-2742-0609



www.netapp.com